

7.1.3 Types of degradable and non-degradable waste

Solid Waste Management:

- To reduce waste at institute students and staff are educated on proper waste management practices through lectures, advertisement on notice boards, displaying slogan boards in the campus.
- Waste is collected on daily basis from various sources and is separated as dry and wet waste.
- Colour coded dustbins are used for different types of wastes. Blue for paper, Green for glass , Yellow for plastic and Red for metals.

Liquid Waste Management:

- Liquids are diluted by getting mixed with washrooms and toilet liquid wastes into the common drainage.

Biomedical waste management

- Not uploaded

E-Waste Management:

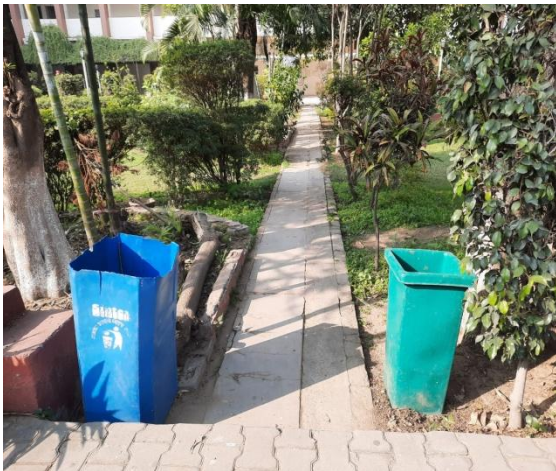
- E-waste collected is stored in store rooms and disposed every year accordingly.
- Old monitors and C.P.U.s are repaired by our technician and reused.
- Empty toners , cartridges , outdated computers and electronic items are sold as scrap to ensure their safe recycling.

Waste recycling system:

- Efforts have taken to produce compost manure from certain solid waste from other sources and efficiently run by the students . Manure is used for the purpose of herbal garden.

Hazardous chemicals and radioactive waste management

- Not uploaded



Solid Waste Management (7.1.3)



Waste Recycling System (7.1.3)

Principal *S. V. Desai*
Kamla Nehru College For Women
Phagwara (Kapurthala)